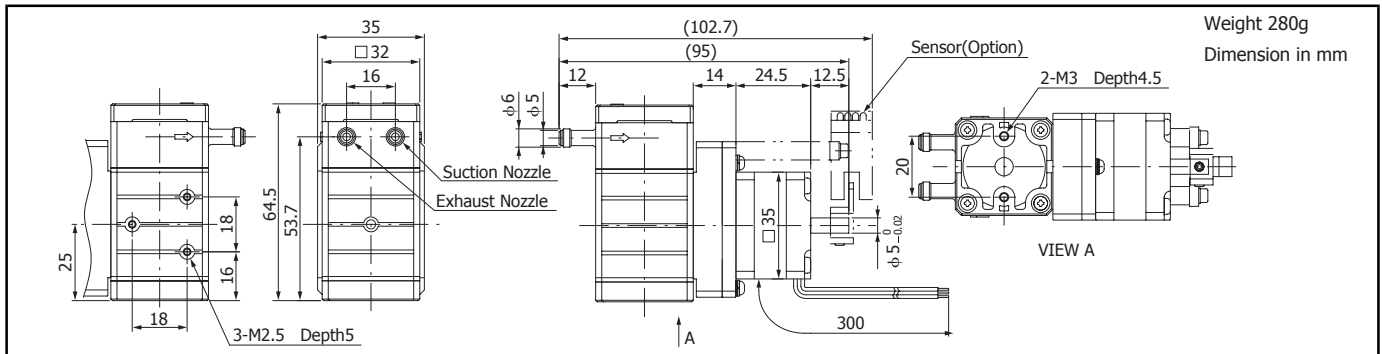


### 7039

#### Micro Diaphragm Liquid Pump



Optional Photomicrosensor: Omron, EE-SX672A (available on request) Recommended stepper driver: Japan Servo, Servex FTD3S2P16 DC24V Remarks ) EE-SX672A is official model No. for Omron corporation and FTD3S2P16 is official model No. for Japan Servo Co.,Ltd

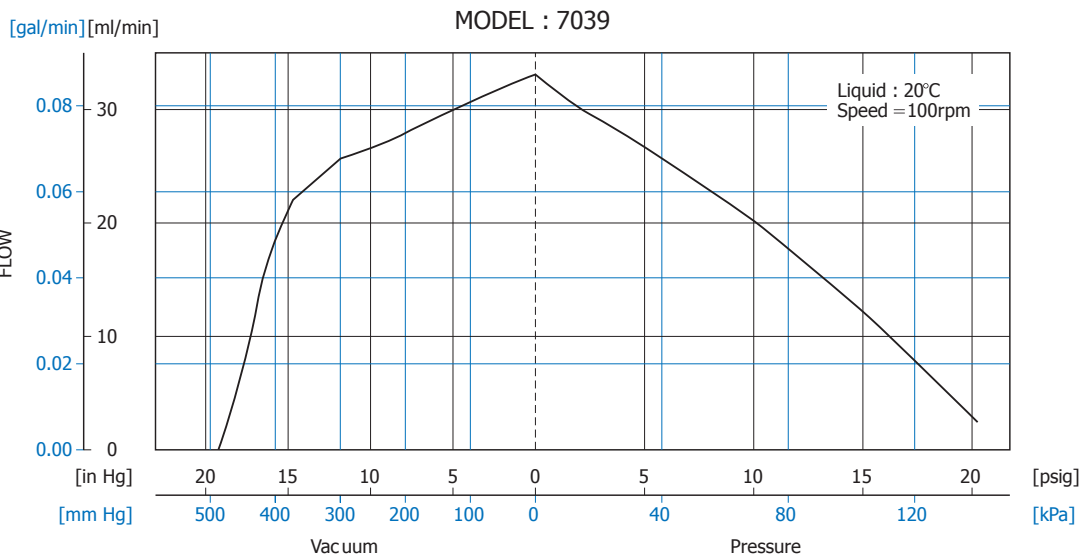
#### Features

- ▶ Flow Rate Fine Adjustable By Stepper Drive Circuit
- ▶ Diaphragm Position Control By Optional Sensors

#### Ordering number

	7039	
Nominal voltage	10.8	V
Motor type	3-Phase Stepper Motor	
Step	1.2	°/step
Nominal speed	100 (full step)	rpm
Flow rate at nominal speed	32 (0.32 ml/stroke)	ml/min
Nominal current consumption	0.3	A/phase
Exhaust pressure range	0...+100	kPa
Suction pressure range	-375...0 (-50...0 kPa)	mmHg
Pull-in rate	Over 900( Full step)	pps
Pull-out rate	Under 1100( Full step)	pps

#### Performance characteristics



### General Specifications

Ambient temperature range	+5...+50	°C
Fluid temperature	+5...+50	°C
Rubber material	FKM	
Resin material	PFA, POM	

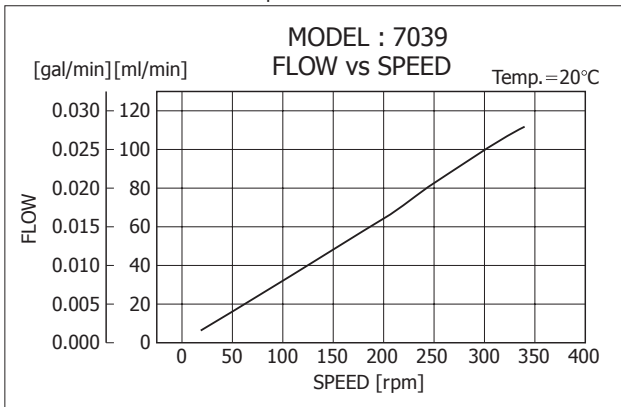
Conditions: Data displayed in this datasheet are measured with purified water at 20°C using a Toalon-G tube of 4mm internal (6mm external) diameter and 160cm length using Namiki standard test equipment.

### Options:

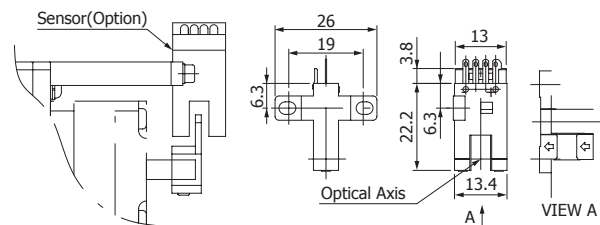
For special solutions or different wetted materials, please contact our sales division.

Ordering number	7039D	7039S	7039SD	7049	7049D	7049S	7049SD
Diaphragm	FKM	FKM	FKM	PTFE	PTFE	PTFE	PTFE
Sensor	W/O	With	With	W/O	W/O	With	With
Driver	With	W/O	With	W/O	With	W/O	With

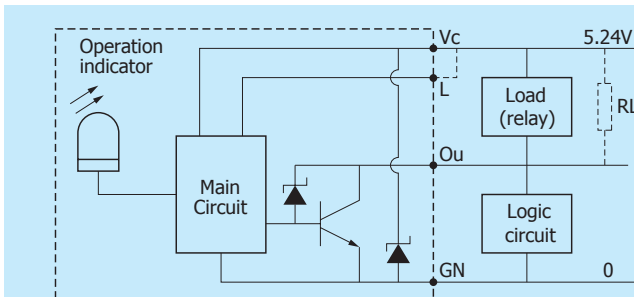
Flow - Speed Characteristics



Optional Photomicrosensor: Omron, EE-SX672A



### Photomicrosensor Output Circuit (NPN)



Note: Connect RL only when logic circuit is driven

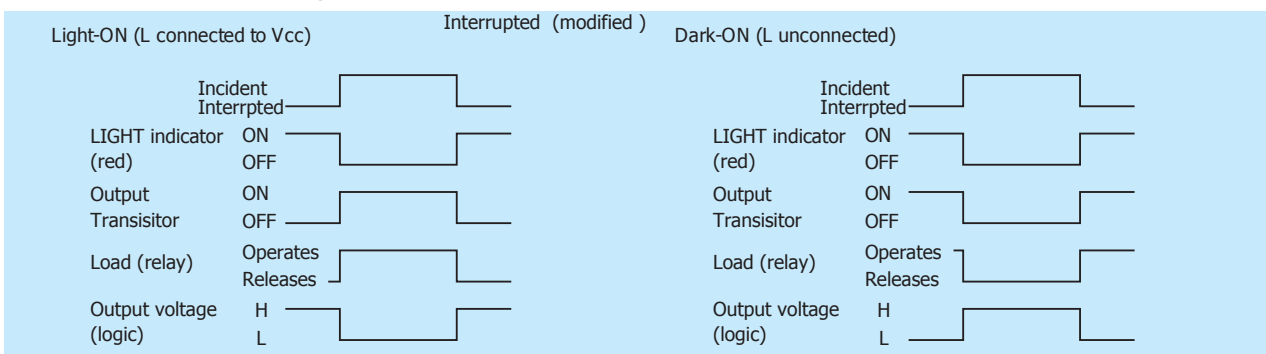
#### Main Specifications

Supply voltage	5...24	V
Current consumption	35	mA
Max. Load current	100	mA
Max. frequency	1	kHz

#### Electrical connections

Pin 1	Vcc
Pin 2	L
Pin 3	Output
Pin 4	GND

### Photomicrosensor Timing Chart



Important: For detailed information please refer Omron specification.