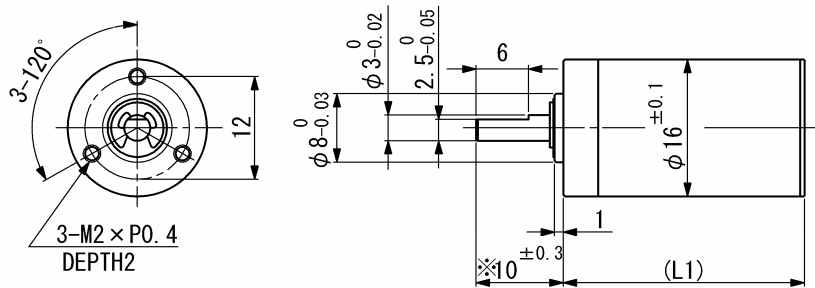


SPG16

Planetary gearhead



Dimension in mm Note) Dimension marked ※ is measured with shaft pushed against gearhead.

For combination with motors: SCL16-25, SCL16-30, SCL17-30, SCL18-25, SCL18-33

| General specifications | SPG16 | |
|---|--------------------------|-----|
| Housing material | Metal | |
| Geartrain material | Steel | |
| Recommended max. input speed | 6000 | rpm |
| Operating temperature range | -10...+60 | °C |
| Backlash at no-load per stage | ≤ 1 | ° |
| Bearings on output shaft | Sintered sleeve bearings | |
| Max. shaft radial load (7 mm from flange) | 4 (25) | N |
| Max. shaft axial load | 2 | N |
| Max. shaft press fit force | 30 | N |
| Shaft radial play | ≤ 0.03 | mm |
| Shaft axial play | ≤ 0.2 | mm |

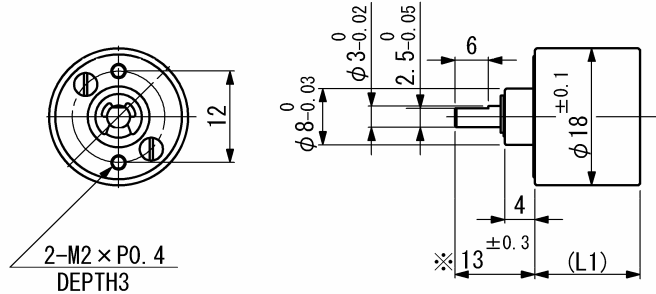
In parenthesis the max. radial load with ball bearing option.

| Ratio (nominal) | Stage | Gearhead length, L1 [mm] | Gearhead weight [g] | Max. allowable torque [mNm] | | Length with motor [mm] | | | | | Efficiency [%] | Direction of rotation |
|-----------------|-------|--------------------------|---------------------|-----------------------------|--------------|------------------------|----------|----------|----------|----------|----------------|-----------------------|
| | | | | Continuous | Intermittent | SCL16-25 | SCL16-30 | SCL17-30 | SCL18-25 | SCL18-33 | | |
| 3.6 : 1 | 1 | 15.3 | 20 | 200 | 400 | 40.3 | 46.7 | 46.7 | 40.8 | 50.3 | 85 | = |
| 4.7 : 1 | 1 | 15.3 | 20 | 200 | 400 | 40.3 | 46.7 | 46.7 | 40.8 | 50.3 | 85 | = |
| 13 : 1 | 2 | 19.5 | 24.5 | 200 | 400 | 44.5 | 50.9 | 50.9 | 45 | 54.5 | 72 | = |
| 22 : 1 | 2 | 19.5 | 24.5 | 200 | 400 | 44.5 | 50.9 | 50.9 | 45 | 54.5 | 72 | = |
| 61 : 1 | 3 | 23.7 | 29 | 200 | 400 | 48.7 | 55.1 | 55.1 | 49.2 | 58.7 | 61 | = |
| 105 : 1 | 3 | 23.7 | 29 | 200 | 400 | 48.7 | 55.1 | 55.1 | 49.2 | 58.7 | 61 | = |

V01

SSG18

Spur gearhead



Dimension in mm

Note) Dimension marked ※ is measured with shaft pushed against gearhead.

For combination with motors: SCL18-25, SCL18-33

For combination with motor-tachogenerator: SCL18-44

General specifications

| | SSG18 | |
|--|--------------------------|-----|
| Housing material | Metal | |
| Geartrain material | Metal | |
| Recommended max. input speed | 4000 | rpm |
| Operating temperature range | -10...+60 | °C |
| Max. backlash at no-load, 4 stages | ≤ 4 | ° |
| Bearings on output shaft | Sintered sleeve bearings | |
| Max. shaft radial load (10 mm from flange) | 4 | N |
| Max. shaft axial load | 2 | N |
| Max. shaft press fit force | 30 | N |
| Shaft radial play | ≤ 0.03 | mm |
| Shaft axial play | ≤ 0.2 | mm |

| Ratio (nominal) | Stage | Gearhead length, L1 [mm] | Gearhead weight [g] | Max. allowable torque [mNm] | | Length with motor [mm] | | | | Efficiency [%] | Direction of rotation | |
|-----------------|-------|--------------------------|---------------------|-----------------------------|--------------|------------------------|----------|----------|--|----------------|-----------------------|---|
| | | | | Continuous | Intermittent | SCL18-25 | SCL18-33 | SCL18-44 | | | | |
| 15 : 1 | 3 | 12.5 | 16.4 | 40 | 80 | 38 | 47.5 | 56.7 | | | 73 | ≠ |
| 27 : 1 | 3 | 12.5 | 16.4 | 40 | 80 | 38 | 47.5 | 56.7 | | | 73 | ≠ |
| 47 : 1 | 4 | 14.9 | 19.2 | 40 | 80 | 40.4 | 49.9 | 59.1 | | | 66 | = |
| 75 : 1 | 4 | 14.9 | 19.2 | 40 | 80 | 40.4 | 49.9 | 59.1 | | | 66 | = |
| 95 : 1 | 4 | 14.9 | 19.2 | 40 | 80 | 40.4 | 49.9 | 59.1 | | | 66 | = |

V01

Namiki Precision of Singapore Pte Ltd.
 TEL: +65-6227-2862 FAX: +65-6227-3327
 URL: www.namikisingsapore.com.sg/
 E-mail: namikisales@nps.com.sg

Specifications subject to change without notice