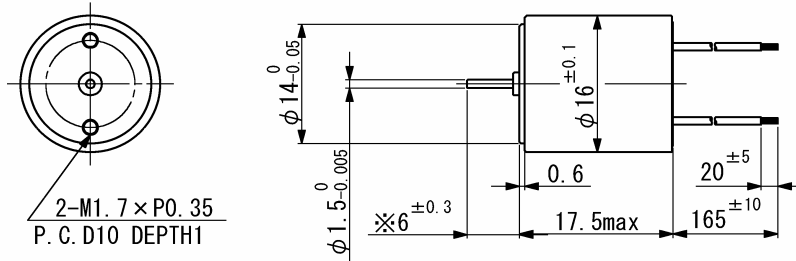


# SCL16-15

Precious metal commutation



Weight 17.9 g  
Dimension in mm

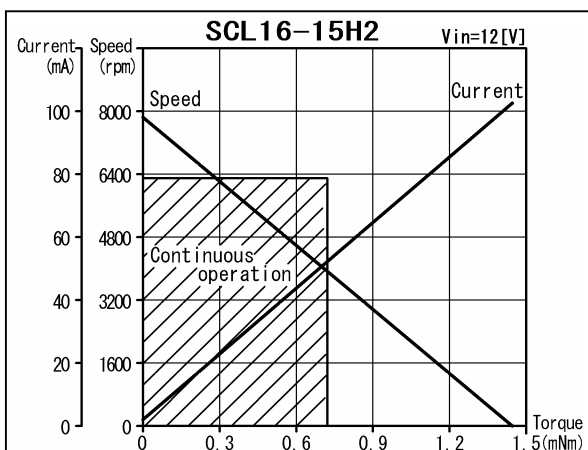
Note) Dimension marked ※ is measured with shaft pushed against motor.

For combination with gearhead: SSG15

Ordering number				SCL16-15H2
1 Nominal voltage				12 V
2 Terminal resistance				117 Ω
3 Output power				0.3 W
4 Efficiency				74 %
5 No-load speed				7850 rpm
6 No-load current				2 mA
7 Stall torque				1.44 mNm
8 Friction torque				0.03 mNm
9 Back-EMF constant				1.5 mV/rpm
10 Torque constant				14.3 mNm/A
11 Slope of N-T curve				5460 rpm/mNm
12 Coil inductance				1.55 mH
13 Mechanical time constant				23.1 ms
14 Rotor inertia				0.4 gcm <sup>2</sup>

### Continuous operation

15 Speed range				6300 rpm
16 Max. torque				0.72 mNm



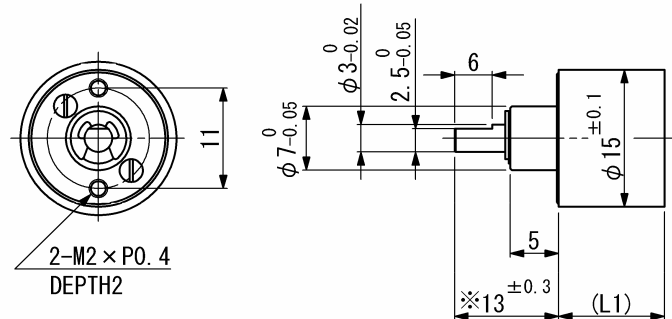
### General specifications

17 Operating temperature	-20...+60	°C
18 Max. coil temperature	+80	°C
19 Thermal resistances	R <sub>th1</sub> = 12, R <sub>th2</sub> = 40	K/W
20 Bearings type	Sintered sleeves	
21 Max. shaft radial load	1.2 (5 mm)	N
22 Max. shaft axial load	0.2	N
23 Max. axial load at standstill	9.8	N
24 Shaft radial play	0.05	mm
25 Shaft axial play	0.03...0.2	mm

**Options:** Lead wires length, shaft length, special coils, commutator with capacitors.

# SSG15

## Spur gearhead



Dimension in mm

Note) Dimension marked ※ is measured with shaft pushed against gearhead.

**For combination with motors: SCL16-15, SCL16-25, SCL16-30, SCL17-30**

**For combination with motor-tachogenerators: SCL16-44, SCL17-44**

### General specifications

### SSG15

Housing material	Metal	
Geartrain material	Metal	
Recommended max. input speed	6000	rpm
Operating temperature range	-10...+60	°C
Max. backlash at no-load, 5 stages	≤ 5	°
Bearings on output shaft	Sintered sleeve bearings	
Max. shaft radial load (10 mm from flange)	4	N
Max. shaft axial load	2	N
Max. shaft press fit force	30	N
Shaft radial play	≤ 0.03	mm
Shaft axial play	≤ 0.2	mm

Ratio (nominal)	Stage	Gearhead length, L1 [mm]	Gearhead weight [g]	Max. allowable torque [mNm]		Length with motor [mm]						Efficiency [%]	Direction of rotation
				Continuous	Intermittent	SCL16-15	SCL16-25	SCL16-30	SCL17-30	SCL16-44	SCL17-44		
29 : 1	3	9.6	8.9	15	30	27.1	34.6	41	41	54.1	54.2	73	≠
49 : 1	4	11.6	10.3	24	60	29.1	36.6	43	43	56.1	56.2	66	=
71 : 1	4	11.6	10.3	24	60	29.1	36.6	43	43	56.1	56.2	66	=
94 : 1	4	11.6	10.3	24	60	29.1	36.6	43	43	56.1	56.2	66	=
198 : 1	5	13.6	11.5	24	60	31.1	38.6	45	45	58.1	58.2	59	≠