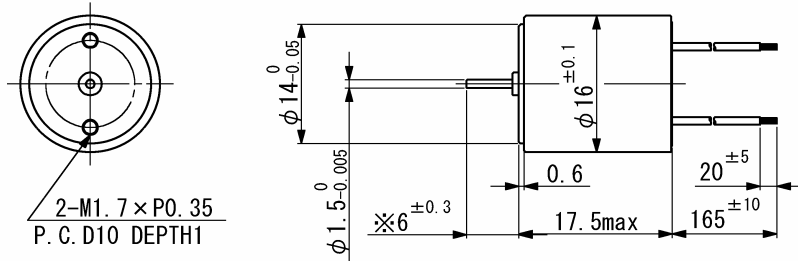


SCL16-15

Precious metal commutation

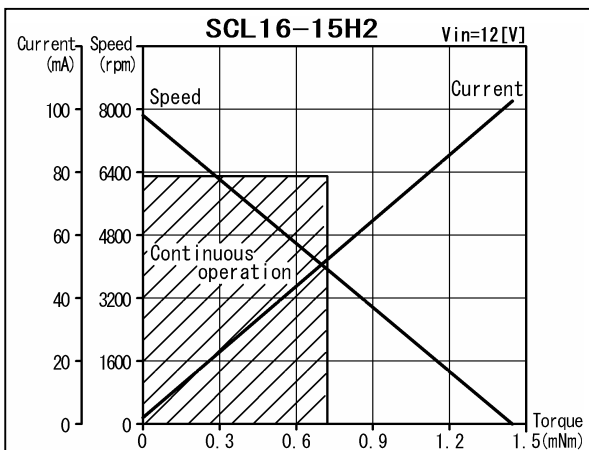


Weight 17.9 g
Dimension in mm

Note) Dimension marked ※ is measured with shaft pushed against motor.

For combination with gearhead: SSG15

Ordering number	SCL16					
			-1507	-1525	-1559	-15H2
1 Nominal voltage			3	6	9	12 V
2 Terminal resistance			6.5	25	59	117 Ω
3 Output power			0.34	0.35	0.33	0.30 W
4 Efficiency			76	76	75	74 %
5 No-load speed			7330	7630	7840	7850 rpm
6 No-load current			7	4	3	2 mA
7 Stall torque			1.8	1.7	1.6	1.4 mNm
8 Friction torque			0.029	0.029	0.029	0.029 mNm
9 Back-EMF constant			0.40	0.77	1.1	1.5 mV/rpm
10 Torque constant			3.8	7.4	10.8	14.3 mNm/A
11 Slope of N-T curve			4170	4380	4850	5450 rpm/mNm
12 Coil inductance			0.11	0.41	0.88	1.6 mH
13 Mechanical time constant			23	23	23	24 ms
14 Rotor inertia			0.52	0.50	0.46	0.42 gcm ²
Continuous operation						
15 Max. torque			1.4	1.3	1.3	1.2 mNm



General specifications

16 Operating temperature	-20...+60	°C
17 Max. coil temperature	+80	°C
18 Thermal resistances	R _{th1} = 12, R _{th2} = 40	K/W
19 Bearings type	Sintered sleeves	
20 Max. shaft radial load	1.2 (5 mm)	N
21 Max. shaft axial load	0.2	N
22 Max. axial load at standstill	9.8	N
23 Shaft radial play	0.05	mm
24 Shaft axial play	0.03...0.2	mm

Options:

Lead wires length, shaft length, special coils, commutator with capacitors.

V01

Namiki Precision of Singapore Pte Ltd.
TEL: +65-6227-2862 FAX: +65-6227-3327
URL: www.namikisingapore.com.sg/
E-mail: namikisales@nps.com.sg

Specifications subject to change without notice